



### Parish Council 2022

**Arthur Peake**

Chairman 408728

**Ian Sadler**

Vice Chairman & Broadband  
242570

**Roy Barker**

241045

**Richard Dewhirst**

07557 530433

**Bob Fitch** Tree Officer 241727

**Donia Stick** Community Speed  
Watch 245813

**Mark Taylor** 07391 535233**Carol White**

Parish Clerk and Responsible  
Financial Officer 240780

**Minutes of all Parish Council  
meetings can be accessed  
online at One Suffolk  
[greatashfield.onesuffolk.net/](http://greatashfield.onesuffolk.net/)**

### Lord Thurlow Hall Committee Members

**Roy Barker**

Hon Chairman and Treasurer  
pro tem 241045

**Sue Howes**

Hon Secretary 242983

**Peggy Elms** 408357**Margaret Barrett**

Village Hall Draw 259113

**Di Barker**

Village Hall bookings  
241045

**Lindsay Pilags**

07904 053323

**Emma Clay**

Please send interesting items or  
photographs you would like  
included in the newsletter to  
the Editor Mandie Beckley at  
[mbeckley@dircon.co.uk](mailto:mbeckley@dircon.co.uk)

**COPY DEADLINE FOR THE NEXT  
ISSUE: 1st November 2022**

## Parish Council Summary Autumn 2022



*Arthur Peake, back in the Chair*

Firstly many thanks to Roy Barker for his commitment to the Parish Council. As you may know he resigned at the annual Parish meeting ahead of his planned move to Elmswell later this year. I suspect there will be more on Roy and Di's contributions to the village in future issues.

It feels like déjà vu but I have taken up the chair of the council for a year and Ian Sadler has agreed to be vice chair. At that annual meeting we formally welcomed Mark Taylor to the PC.

There have been two scheduled meetings of the PC since the last Newsletter, together with one planning meeting and one working group session.

There is a Suffolk Community Governance Review taking place, its purpose is to look into 'creating, merging, altering or abolishing Parishes' and related electoral arrangements. Initial consultation was due by 27th May and we registered our wish not to be merged with adjoining parishes (as happened to the District representation). The review results will be published in Spring 2023.

The working group addressed the Portable Space application for a Lawful Development Certificate which would remove their operating hours restrictions. Residents on the lanes used by PSL were invited to lodge their concern and a large number did just that. Suffolk Planning will decide the case in August (after writing this Newsletter, but before it is posted!)

On the wider traffic front our County Councillor is helping to get information on physical traffic calming measures used locally. At a police road safety conference at the end of July it was clear that rural speeding enforcement relies on Community Speed Watch (CSW) teams, not just as a presence to deter and educate drivers but also to supply data to the police. Our roads have a speeding status, Elmswell Road is 'red', and the CSW data is the only constant update to that status. There is a plea for CSW volunteers elsewhere in this issue. It does not matter if you only have an hour to spare a week, it will make a difference.

Finally, we will have a PC vacancy when Roy does move. If you have never considered being a councillor please do think about joining and bringing your skills to the local decision making process.



*Ian Sadler, the new Vice Chairman*

*Arthur Peake, Chairman*

## Great Ashfield and Badwell Ash WI

Our May meeting was our AGM and had a red, white and blue theme for the Queen's Platinum Jubilee. All members of the Committee were happy to stand again and were re-elected.

During our June meeting there was a fascinating talk by Jane Hoggar, an ex Bluebell girl (pictured right). We had a very entertaining evening hearing about the history of Bluebell Girls, and her time with them, which came about as she grew too tall to continue with ballet dancing.



Our July meeting was a private visit to Holm House Gardens in Drinkstone. This is a stunning 10 acre garden with a woodland walk, kitchen garden, formal garden and large lake.

Our August meeting was held in the lovely garden of Brook Hall Cottage, Daisy Green, where the members enjoyed tea and cakes on the lawn in glorious sunshine.

Our next two meetings – listed below, will be held in Lord Thurlow Hall at Great Ashfield at 7.30pm. Our meetings are held on the second Thursday of each month.

**September 8th** at 7.30pm – Liza Jones – Behind the Bathroom Door

**October 13th** at 7.30pm – Robert Leader – In Search of Secret Suffolk

We would welcome any new members to join us. We are not a huge group but a very friendly one and we invite you come and see what we are all about. All visitors are welcome to join us for the evening. This costs £3 and includes a raffle ticket and refreshments.

For further information contact Kate Sadler – [kateasadler01@gmail.com](mailto:kateasadler01@gmail.com)

## Councillor Meyer's musings

A few highlights from MSDC's busy programme over the last few weeks. Should you require any more information on any subject raised please get in touch. My contact details are below.



- Blueprint for the future of social housing approved
- Babergh and Mid Suffolk District Councils have approved their blueprint for the future of social housing in our districts. It will ensure that our tenants have good quality and sustainable homes, in safe neighbourhoods
- Energy Rebate scheme to be extended
- Residents in Babergh and Mid Suffolk who have been unable to access financial support through the Council Tax Energy Rebate Scheme may now be able to do so through a discretionary fund
- Wildflowers to spring up across Babergh and Mid Suffolk
- Our councils are trialling wildflower verges across our districts, as part of efforts to tackle biodiversity and climate change
- £450,000 more funding for community causes now available
- Community groups across Babergh and Mid Suffolk can now bid for a share of £450,000 to improve their neighbourhoods, thanks to the two new Community Development Grants
- Councils take action to help restore empty homes into family homes
- Babergh and Mid Suffolk Councils' new Empty Homes Policy is set to reduce the number of long-term empty properties in the districts. There are currently over 1,000 empty properties across the districts which, once restored, will help ease the growing demand for homes for residents
- Councils lead the way towards sustainable travel vision
- Babergh and Mid Suffolk are taking the next step towards a sustainable travel solution, aiming to increase active travel and help tackle climate change
- Summer holiday activities to support families over the school break
- An array of activities are being staged during the summer holidays to provide entertainment and support to families across Babergh and Mid Suffolk
- From adventure days to swimming, cooking classes to woodwork there is something to keep everyone occupied and active over the summer holidays thanks to Babergh and Mid Suffolk District Councils and partners
- Milestone reached on Chambers Green Development
- The completion of the first phase development at Chambers Green in Needham Market has been marked by councillors and representatives from Mid Suffolk Growth.

Rick Meyer – [Richard.meyer@midsuffolk.gov.uk](mailto:Richard.meyer@midsuffolk.gov.uk)



In August the ladies of the WI enjoyed tea at Brook Hall Cottage, Daisy Green



The beautiful gardens at Holm House, Drinkstone, which the WI visited in July

## Can you spare at least an hour a week?

We are often asked why we are not holding regular Community Speed Watch (CSW) sessions. This is because of a lack of volunteers. Currently we have only two active volunteers from Great Ashfield, which means that we cannot meet the statutory requirement for three people in a team.

We contacted the Suffolk County Council ANPR project co-ordinator in June as we had been unable to run any CSW sessions since March. He was very supportive and at the start of July he arranged for one of their trial ANPR camera devices to be located for a week on the pole nearest to Great Ashfield Church. This was monitoring traffic travelling only from the direction of Badwell Ash.

Over the week the camera was in situ, the Suffolk Highways ANPR device took a total of 3,944 photos. The data indicated that nearly 13% of these vehicles were travelling at a prosecutable speed. Nearly 35% were travelling at 31mph or more. The breakdown shows:

- 2,568 vehicles travelling at 27-30mph (our thanks go to you all)
- 879 travelling at 31-34mph
- 497 travelling at 35mph or over
- The fastest speed recorded was 54mph.

Our new solar-powered SID is now up and running and the anonymous data collected indicates that it is helping to slow traffic passing through the village from the Badwell Ash direction.

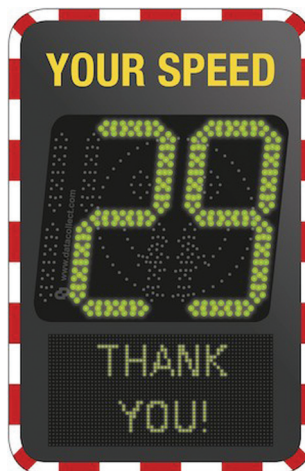
However, speeding continues to be a very real concern. Following an offer of finance, the Parish Council is still hoping to find a suitable location for a second device to monitor traffic entering the village from Elmswell. Any pole location would need to meet certain criteria.

Also, its placing would need to be agreed by nearby residents and thus far agreement has not been reached.

The ANPR service is a Suffolk CC trial.

When the trial is complete, letters will be issued to offending motorists. The current lack of letters being sent out diminishes its impact and reinforces the current need for CSW because at present the only data on speeding drivers is being generated from Community Speed Watch teams. If we want to keep our periodic Suffolk CC camera visits, we have to run these CSW sessions.

*Even if you can spare only one hour a week, please contact me at donia.stick@gmail.com, 01359 245813 or 07713 465766.*



## Village Hall news

We celebrated the Queen's Platinum Jubilee back at the beginning of June with a BBQ for over 60 people on the usual Friday Pub night. A big thank you to everyone who was involved with the organisation of a great evening, not to forget the chefs! Mark Livens



who slow cooked brisket on his own BBQ before the main event. It was delicious! Paul Charie for cooking the burgers and sausages. Di Barker for her amazing home made Jubilee pudding (pictured below) and serving it as well. Chrissie Charie for her gin punch and Margaret & Trevor Barrett for serving at the bar.



**The next Pub Evenings will be:**  
**Friday 2nd September** at 7.30pm  
**Friday 7th October** at 7.30pm  
**Pumpkin Evening & Fish & chips – Saturday 29th October** at 7.30pm  
 The **Annual General Meeting** for the Village Hall is held in September (the date will be emailed) when we will be looking for new members to join our friendly team because several people are retiring. There are usually three to four meetings a year to organise events. If you would like to get involved and meet new people, please contact Roy or Di Barker on 241045.

*Sue Howes*

## Village Hall Draw results

<b>MAY</b>	<b>1st</b>	<b>£25</b>	Celia Orford	No. 238
	<b>2nd</b>	<b>£15</b>	Nancy Calderbank	No. 19
	<b>3rd</b>	<b>£10</b>	Jackie Livens	No. 170
	<b>4th</b>	<b>£5</b>	C Seaton	No. 233
<b>JUNE</b>	<b>1st</b>	<b>£25</b>	Jane Storey	No. 160
	<b>2nd</b>	<b>£15</b>	Kemp-Smith	No. 184
	<b>3rd</b>	<b>£10</b>	L + N Boyle	No. 147
	<b>4th</b>	<b>£5</b>	P & D Edgemore	No. 97
<b>Special Platinum Prize</b>		<b>£70</b>	Bec Taylor	No. 201

We are happy to collect cash or cheques for your annual payment (£12), but if you prefer to pay online please contact me at robin@greenbee.net or phone 01359 259113. Thank you for your support of Lord Thurlow Hall.

*Margaret Barrett*

# All Saints' Church

Rector – Revd Katharine Valentine  
01359 235095

## Monthly pattern of Worship

**First Sunday** – 10am Benefice Family@Church  
St Mary's Church, Pakenham,  
breakfast available from 9.30am

**Second Sunday** – 9.30am  
Morning Worship

**Third Sunday** – 11am Family Communion

**Fourth Sunday** – 9.30-11am  
Community Breakfast TOAST

**TOAST Community Breakfast**  
9.30-11am

On fourth Sunday of the month drop in to the church where bacon rolls, toast with a selection of preserves, coffee, tea and juice are available along with the chance to catch up with fellow villagers.

## HARVEST FESTIVAL – 10 am Sunday 11th September

Although it will be a challenge this year due to the hot and dry conditions we will be decorating to celebrate the harvest on Saturday 10th September. Anyone who would like to help with this please contact Petrina Miles on 259283.

Donations of home grown flowers and produce as well as tins and packaged provisions would be gratefully received. These will, as in previous years, be given to Tayfen House in Bury St Edmunds. This organisation helps single homeless people with various forms of accommodation and support. They really are very appreciative of our donations.

In the afternoon we will be hosting a charity tea in aid of Macmillan Cancer Support. Tea and a selection of delicious cakes will be available between 3 to 4 pm along with a raffle. Please do join us to raise funds for the work Macmillan give to help and support people living with cancer.

## CHURCHYARD

The PCC would like to make our village churchyard more wildlife friendly.

We already have areas where the grass is only cut once a year and there are already quite a variety of wildflowers so we would like to record what we have and make a photographic display in the porch.

In addition we would like to add bird and bat boxes along with a bug hotel.

If you are interested in being involved with this project please come along to TOAST on Sunday, 25th September where we can discuss this further or contact Stephen Miles 259283.



## Church Wardens

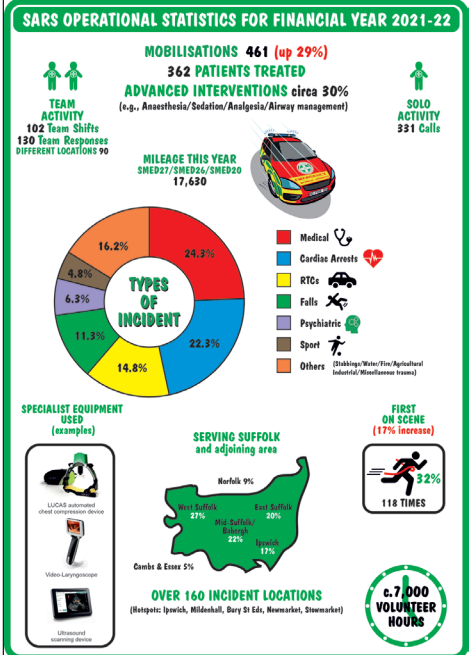
Roy Barker 241045  
Raymond Mayhew 240741

Details of services held in our church are at [www.achurchnearyou.com](http://www.achurchnearyou.com)

The Benefice village and church news magazine is available to read online [www.vcnews.org.uk](http://www.vcnews.org.uk)

Petrina Miles

# Congratulations to SARS for 50 years



The Suffolk Accident Rescue Service (SARS) is celebrating its 50th anniversary this year, continuing to help the people of Suffolk in times of great need. In that time the volunteers have helped over 18,500 patients. SARS provides specialist clinicians who assist the East of England Ambulance Service at incidents where patients require an enhanced level of medical care before they reach hospital. SARS responders include anaesthetists and consultants in emergency medicine as well as critical care paramedics.

To find out more, or to become a volunteer, visit [www.sars999.org.uk](http://www.sars999.org.uk).

## Sponsors wanted

Would you be willing to sponsor the colour printing of this newsletter? The addition of colour adds an extra £22 to the cost of printing and so far several parishioners have done so. If you are willing to help, please contact the parish clerk, Carol White on 240780 or Mandie Beckley on 259734.

Produced for Great Ashfield Parish Council by Mandie Beckley  
Printed by Profile Business Supplies, Bury St Edmunds  
© Great Ashfield Parish Council 2022