



### Parish Council 2023

**Arthur Peake**

Chairman 408728

**Ian Sadler**

Vice Chairman & Broadband  
242570

**Stephen Miles**

Tree Officer 259283

**Richard Dewhirst**

07557 530433

**Donia Stick** Community Speed  
Watch 245813

**Neil Jones** 07876 19381

**Mark Taylor** 07391 535233

**Carol White** 240780

Parish Clerk and Responsible  
Financial Officer

**Minutes of all Parish Council  
meetings can be accessed online at  
One Suffolk**  
[greatashfield.onesuffolk.net/](http://greatashfield.onesuffolk.net/)

### Lord Thurlow Hall Committee Members

**Chairman**

Simon Laidler 244370

**Acting Treasurer**

Roy Barker 241045

**Secretary**

Lindsay Pilags 07904 053323

**Bookings manager**

Carol White 240780

**Draw Manager**

Margaret Barrett 259113

**Committee members**

Sue Howes 242983

Lisa Boyle 07786 223149

**Kitchen Project Sub Committee**

Simon Laidler 244370

Gail Peake 408728

Please send interesting items or  
photographs you would like  
included in the newsletter to  
the Editor Mandie Beckley at  
[mbeckley1@btinternet.com](mailto:mbeckley1@btinternet.com)

**COPY DEADLINE FOR THE NEXT  
ISSUE: 29th April 2024**

## Parish Council Summary Spring 2024



*Arthur Peake, Chairman*

There has been only one meeting since the last Newsletter, held on Thursday, 23rd November 2023.

At this meeting three councillors confirmed that they would be resigning at the annual meeting. One more is moving house in 2024. This leaves three councillors, which is the legal minimum to make decisions, for example paying bills. It is highly likely that without more volunteers the Great Ashfield Parish funds will come under our District Councillor, advised by one or more open meetings per year of interested residents.

The Parish Council gets some stick at times but during the last few years has been a focal point for:

- Events, the WW1 centenary exhibition, candlelit walk and beacon springs to mind
- Grant applications and funds to village organisations
- Consultation on local planning - including the organised objection letters re lorries
- Issues raised re Highways etc.

Time is running out to plan how Great Ashfield PC will be managed in 2024 and onwards. This is my last plea to any potential volunteers – please step up now. Do not regret it later.

Our Responsible Financial Office and Parish Clerk, Carol, has sadly given notice. Carol will be much missed for her hard work and coruscating notes to planners, highways etc.

This is a paid role (not very much I'm afraid), and if anyone would like to pick this up then please let us know.

The Portable Space expansion (Planning Reference DC/23/01506) remains open and provisionally scheduled for review at a Planning Committee in March (13th March but yet to be confirmed). The Parish Council has registered its wish to speak.

The next Parish Council Meeting will be held at on Thursday, 22nd February at 7.30pm in the Lord Thurlow Village Hall.

*Arthur Peake, Chairman*

### *Extract from District Councillor's report November 2023:*

## Storm Babet Flooding

Businesses and residents are being urged to report flood damage via Suffolk County Council's reporting tool as there is government compensation available.

If you have suffered from flooding, go to <https://www.suffolk.gov.uk/roads-and-transport/flooding-and-drainage/report-a-flood-in-suffolk>

## Great Ashfield and Badwell Ash WI

We are a friendly group of ladies who meet on the second Thursday of the month at 7.30pm at Lord Thurlow Hall in Great Ashfield.

Most meetings have either a speaker or an activity, followed by refreshments and then a short business meeting.

At our December meeting we had a wonderful rendition of A Christmas Carol by Mike Wabe, which was a lovely start to the festive season.



2024 is our Centenary year which, with a few WIs in the area closing, is a great achievement and we have various exciting activities planned for our members.

**March 14th at 7.30pm** – Celia Graham from The National Trust – Working lives at Ickworth in the 1930s

**April 11th at 7.30pm** – Our speaker is a member of the Blood Runners who do amazing work carrying out essential blood deliveries.



This will be an Open Meeting so all are welcome, partners, husbands, neighbours. The cost is £3 a head, which includes a raffle ticket and refreshments.

**May 9th at 7.30pm** – AGM

If you are interested in joining our WI, your first visit is free and the following two meetings are £3 per head, which includes a raffle ticket and refreshments.

If you would like to attend any of the above meetings or need further information, please contact either Midge on 259399 or Kate Sadler on 242570 or email [kate-sadler01@gmail.com](mailto:kate-sadler01@gmail.com)

## Dear Residents

### Traffic issues

I am very aware that the residents of Great Ashfield are really concerned about traffic generally and feel that their worries about traffic volumes and safety are being ignored.

Large lorries are using the unclassified Wetherden Road and School Road which are narrow, passing places are limited and traffic regularly has to pull into the verge. The Wetherden Road/School Road route is basically a rat run to access the Elmswell Road, Elmswell and the A14.

Residents are also worried about traffic volumes and speeding along the Elmswell Road, which makes walking along the road dangerous and unpleasant.

I will do whatever I can to support efforts to improve this situation.

### Skills and Innovation Centre

The District Council is planning to build a Skills and Innovation centre by the A14 near Stowmarket. The funding is coming from central government via the Freeport scheme and will represent a substantial investment in the district.

This facility will provide office space for innovative companies and provide skills training. The training will cover generic skills development but will also have a focus on the green economy providing practical training in areas such as heat pump installation.

### Longer term changes being planned to recycling

There are a number of changes currently being planned for recycling. This won't happen for a couple of years but just to let you know what is envisaged.

From April 2026 a weekly food waste collection will be introduced. Households will be provided with food waste containers which will be emptied from your doorstep like the normal bin collection.

At the same time the range of items you can put in the recycling bin will be increased to include glass bottles and jars, and cartons.

Flexible plastics such as bread bags, plastic films etc will follow a year later. At the moment you need to take plastic film to a supermarket if this is to be recycled.

This will mean that from 2027 most day-to-day items can be recycled via the recycling bin. Larger or specialist items will still need to go to a recycling centre.

There will also be publicity about reducing the use of packaging generally.

*Richard Winch – [richard.winch@midsuffolk.gov.uk](mailto:richard.winch@midsuffolk.gov.uk)*



## We need volunteer toad patrollers at these locations:

### Badwell Ash, Stowlangtoft and Daisy Green

From late February to mid-April, toads emerge from hibernation, embarking on a perilous journey to their spawning ponds. Thousands die on roads annually, so they urgently require our help. Toads typically move at night when the temperature is above 6°C on damp evenings.

Patrols consist of a couple of hours a week in teams of 2/3. Short training, insurance and answers to all your questions are provided.

## Local drivers

### We need your help too!

Please take care, slow down and look out for our Highway signs and our patrollers in the Hi-Vis jackets.

toads on roads



Want to help? Contact us at [badwellashtoads@gmail.com](mailto:badwellashtoads@gmail.com)



# Village Hall News

The New Year has kicked off well with our impressive new catering kitchen and a redesigned bar area. We had an excellent turn out at the Christmas Pub night and we hope to continue to provide some great events for the village through 2024. Please come and see the new facilities and remember the hall is available for private bookings. Get in touch with Carol White for any bookings enquiries.

Some important dates for the diary:

## Village Hall Grand Opening – Saturday March 16th, 10.00am-12.00pm

An event to mark the official opening of the new facilities and we are planning on inviting councillors, MPs, representatives from local businesses, press and local community support groups. Of course, this invitation goes out to all of Great Ashfield so please join us if you can. Refreshments will be provided.

## ‘Choctastic’ Pub Night – Friday April 5th, 6.30pm start



With Easter just round the corner and New Year’s resolutions a distant memory why not have a chocolate themed pub night! A celebration of all things chocolate including cakes, games, chocolate cocktails and an egg painting competition. Bring your decorated chicken eggs along for judging on the night.

### Pumpkin night alert!

Thinking ahead to pumpkin night, we have a new award this year for young vegetable growers. This is for any vegetable(s) grown by anyone under 14 years old. So, get sowing, feeding and watering and good luck!

*Simon Laider*



## Village Hall pub nights

Friday 1st March - Pub Night and Quiz

Friday 3rd May - Pub Night

Friday 3rd June - Pub Night (tbc)



*The Christmas pub night proved to be a very popular event*



*The new kitchen will make catering for any gathering much easier*



## Village Hall Draw results

### NOVEMBER

1st	£25	Mrs Jenkins	No: 235
2nd	£15	S Chapman-Hatchett	No: 2
3rd	£10	A Ryall	No: 175
4th	£5	H Watts	No: 67

### DECEMBER

1st	£25	Mrs Halls	No: 107
2nd	£15	Mrs Constantine	No: 222
3rd	£10	B Barker	No: 117
4th	£5	Z Lawes	No: 25

### JANUARY

1st	£25	J Mulley	No: 27
2nd	£15	G & A Peake	No: 43
3rd	£10	Mr Austin	No: 224
4th	£5	C Potter	No: 83

### Subscriptions

We are happy to collect cash or cheques for your annual payment (£12), but if you prefer to pay online please contact me at blyton2209@gmail.com or phone 01359 259113. Thank you for your support of Lord Thurlow Hall.

*Margaret Barrett*

## Parish Clerk sought

I have decided to step down from my role as Parish Clerk/RFO at the end of March 2024. Would anyone be interested in taking over from me? If so please contact me, Carol White, on 240780 and I can fill you in with all the details.

## Village Hall Treasurer

If you are interested in joining our friendly team, please contact Simon Laidler (244370) or Roy Barker (241055) for information.

*Produced for Great Ashfield Parish Council by Mandie Beckley.  
Printed by Profile Business Supplies, Bury St Edmunds  
© Gt Ashfield Parish Council 2024*

## All Saints' Church

**Rector – Revd Katharine Valentine** 01359 235095

### Monthly pattern of Worship

**First Sunday** – 10am Benefice Family@Church  
St Mary's Church, Pakenham,  
breakfast available from 9.30am

**Second Sunday** – 9.30am Morning Worship

**Third Sunday** – 11am Family Communion

**Fourth Sunday** – 9.30-11am Community Breakfast TOAST

**TOAST Community Breakfast** 9.30-11am

We are now holding Toast back in the church.



### CHRISTMAS

Thank you to the families who helped decorate the church at Christmas by depicting a selection of Carols.

These were then sung during the carol service. The decorations were very creative, all quite different and much admired by all those who attended the service.



*Hark The Herald Angels Sing was depicted by hand made angels*



*We Three Kings of Orient Are made a very colourful sight*



*While Shepherds Watch Their Flocks by Night under a starry sky*

### MOTHERING SUNDAY, 10TH MARCH

Please join us to give thanks for our mothers and other special mother figures in our lives. Gifts of flowers will be given out during the service.

### EASTER

#### Good Friday 29th March

Join us at 1.30pm at The Lord Thurlow Hall to make floral crosses before processing to the church for a short Service at 2.15pm. This is suitable for both children and adults together.

#### Saturday, 30th March

We shall be decorating the church. If you would like to help please get in touch with Petrina Miles on 01359 259283.

#### Easter Sunday, 31st March

Holy Communion service at 11am, led by Revd. J Parr.

### Church Wardens

Roy Barker 241045, Raymond Mayhew 240741

Details of services held in our church are at [www.achurchnearyou.com](http://www.achurchnearyou.com)

The Benefice village and church news magazine is available to read online at [www.vcnews.org.uk](http://www.vcnews.org.uk)

### VILLAGE LIBRARY

A reminder that the church hosts the village library. Do come and have a look. Books are free to borrow. Additions are always welcome.

### ADVANCE NOTICE

Plant and Yard sale on Saturday, May 11th at Limes Farm in aid of All Saints' Church and The Lord Thurlow Hall.

Petrina Miles

## Asian Hornet alert!

The Asian Hornet (*Vespa velutina*), also known as the Yellow-legged Hornet, is a predatory species of hornet indigenous to Southeast Asia, which arrived accidentally in France in 2004. They have now been found in the UK. They are designated a Notifiable Invasive Species and must be reported if seen or captured.

The best way to do this is via the 'Asian Hornet Watch App' (free for iPhone and Android). The report will be relayed to a local Asian Hornet Team member (most likely me!) for confirmation. The nest will then be found and destroyed by government officers from APHA.

### Why should we be concerned?

The Asian Hornet is voracious and will eat nectar, wasps, bees, flies, butterflies, spiders, caterpillars, fallen fruit and carrion. They are such efficient hunters that they will completely suppress all insects within 1km of their nest!

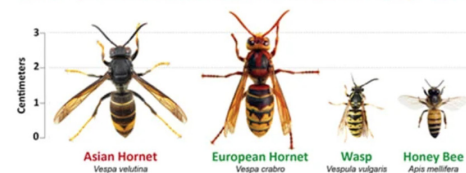
Honeybees are a favourite prey and they will devastate an apiary if they find one. Not surprisingly, beekeepers are keen to repel these invaders but we should all do our bit to help, because all our native insects are at risk.

### What can we do?

Download the app. Be alert. You may hear one before you see it - its wing buzz is loud and low. Report any sightings.

Asian Hornets are black, with yellow legs (socks). Do not confuse them with native insects, particularly the European Hornet (which is predominately brown and not a problem, despite being bigger and scary-looking!)

**Think you've seen an Asian Hornet? Report it!**



Report through the Asian Hornet Watch app or [www.bit.ly/asianhornetreport](http://www.bit.ly/asianhornetreport)

If we can find them now, we can eliminate them but if we fail they will gain a foothold and then we will never be able to stop them.

Greg Monaghan [gmonag@sky.com](mailto:gmonag@sky.com)