



Parish Council 2022

Roy Barker

Chairman 241045

Richard Dewhirst

07557 530433

Bob Fitch Tree Officer 241727

Arthur Peake 408728

Ian Sadler Broadband 242570

Donia Stick Community Speed Watch 245813

Mark Taylor 07391 535233

Carol White

Parish Clerk and Responsible Financial Officer 240780

Minutes of all Parish Council meetings can be accessed online at One Suffolk greatashfield.onesuffolk.net/

Lord Thurlow Hall Committee Members

Roy Barker

Hon Chairman and Treasurer pro tem 241045

Sue Howes

Hon Secretary 242983

Peggy Elms 408357

Margaret Barrett

Village Hall Draw 259113

Di Barker

Village Hall bookings 241045

Lindsay Pilags

07904 053323

Emma Clay

Please send interesting items or photographs you would like included in the newsletter to the Editor Mandie Beckley at mbeckley@dircon.co.uk

COPY DEADLINE FOR THE NEXT ISSUE:

1st August 2022

Parish Council Summary Summer 2022



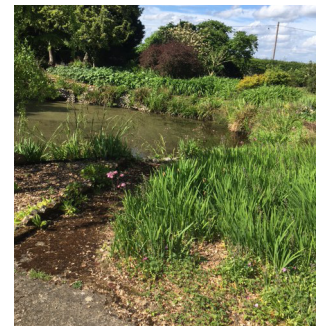
Good day you good people! What is happening in the village at the moment, from the parish council perspective?

We have the AGM in late May where the new parish council and officers will be elected. On Jubilee weekend, we have the Special Pub Night and BBQ at the village hall. There is also much going on locally and throughout Suffolk on the other days of that weekend, which can be enjoyed by all.

Traffic is still a major concern for the parish council, especially speeding and size of vehicles moving through Great Ashfield. We keep working with other authorities to reduce the effects of this growing traffic: the Quiet Lane Scheme and a permanent SID erected in the centre of the village opposite The Glen. All this helps but does not stop speeding and our lanes being used as rat runs, which is a shame! When driving through other villages, we need to remember our own feelings of frustration and keep below the speed limits set there. Let's spread the message and help usher in a more caring and slower way of driving.

Weatherwise, we have been in a long dry spell. We have the crops ripening and the countryside could be tinder dry. Please be wary of garden bonfires getting out of hand, and smoke affecting your neighbours' properties.

As I write, I am sitting here in the garden of Kiln Farm, overlooking the pond that my grandfather established in the 1930-60 era – a pond that is currently full of greater crested newts swimming about and laying their eggs. Like most farming families, one generation follows another in the properties, taking on the responsibilities. Di and I followed my grandparents, John and Amy and their subsequent tenants, and we have had 45 very happy years here. Now, however, it is our son and his wife and daughter who will be moving into the house, probably after Christmas when they have completed their own renovations. Some of you may remember at the end of the 1980s we completely gutted Kiln Farm, living in one end with three walls attached – no ceilings or roof and a large chain holding front and rear together! Hairy, looking back!



Meanwhile, Di and I are going to be living in Elmswell, with all its amenities within walking distance – but still close to our spiritual home of Great Ashfield.

I am mentioning this now because there will be positions and responsibilities needing to be filled and taken up in the Autumn. When we moved here 45 years ago, it was a slow process to become part of the community and find our feet, but it has been so worthwhile and enjoyable! So, if you do not yet feel able to take up a project in the village yet, do throw yourself into events going on. Once you see what is needed, you can offer your own strengths and ideas. That is what village life is all about and how it passes down the generations!

Help Great Ashfield remain GREAT and the special village it is!

Roy Barker, Chairman

Great Ashfield and Badwell Ash WI

After cancelling our January meeting due to rising Covid cases, it is lovely to be back to normal with a packed programme for the forthcoming year.

At our February meeting we had a very interesting talk given by Gina Saunders about a Nursery School in Malawi, after which we enjoyed snacking on tasty food provided by the committee.

In March Paul Seymour from 'Tools with a Mission' spoke about the unwanted tools, sewing and knitting machines and other items they collect and send in kit form to help people in various deprived areas of the world. This allows them to learn a trade and earn from their new found skills. This also proved not only informative but an extremely interesting talk. Should you have any unwanted tools etc they would love to hear from you. Contact www.twam.uk/donatetools or ring Paul Daley on 01473 210220 who can arrange a collection.

Our next three meetings will be held in Lord Thurlow Hall, Great Ashfield at 7.30pm on the second Thursday of each month.

May 12th 2022: Annual General Meeting. We also have a member from our S.W. Federation who is going to speak about the Associated Country Women of the World or ACWW. We raise funds for this charity by putting loose change in the pot each month to help fund projects within the WI's charitable objects.

June 9th 2022: Our speaker will be Jane Haggard – an ex-Bluebell Girl who will tell us about her time spent with them.

July 14th 2022: A garden visit to Holm House in Drinkstone.

We would welcome new members. We are not a huge group but we're very friendly and we invite you come and see what we are all about. All visitors are welcome to join us at £3, which includes a raffle ticket and refreshments.

For further information contact Kate Sadler – kateasadler01@gmail.com

Councillor Meyer's musings

Over the next few weeks I shall be delivering a report at annual Parish Council meetings across the Ward. Listed below are a few of the major points I will be making.

As we emerged from the pandemic Mid Suffolk District Council, unlike many councils, was in a strong financial position which allowed it to: maintain all services at, or above pre Covid levels; invest an additional £5m from reserves to support the recovery; and freeze council tax.

The Council's robust financial position is in part due to the strong performance of its property investment company CIFCO, which is delivering positive returns in the region of £1.5m per year and the decision to relocate council operations to Endeavour House from Needham Market, which has resulted in significant savings while allowing the council to attract high quality staff.

MSDC has declared both climate and biodiversity emergencies. As a result, a carbon reduction management plan and a biodiversity management plan are now in place, which have resulted in many environmental wins over the last year, including:

MSDC has become the first Council in the UK to switch its fleet of vehicles to use hydrotreated vegetable oil. This has resulted in a 90% reduction in harmful emissions

Extensive carbon reduction measures are now in place or planned in the District's leisure centres, including solar panels, air source heating and solar car ports

Fly tipping is a recognised problem and one the Council takes very seriously. To this end work has begun on developing a litter and fly tipping strategy for Mid Suffolk and, since April 2021, 99% of all fly tipping incidents were cleared within 48 hrs.



The Council's Carbon Neutrality journey started in 2018 and it is currently on course to be carbon neutral, as planned, by 2030. We have made a good start, but much work remains to be done.

A Civil Infrastructure Levy (CIL) is raised against the majority of new build houses. The money is collected by MSDC who forward a proportion to the Parish Councils, while the bulk of the funding is held centrally to support infrastructure projects across the District. If you have a community project in mind, now is the time to pursue it and please don't forget that my small Locality Budget is also there to help.

The Walsham le Willows Food Bank was set up in December 2020 at the height of the pandemic to serve all in the area. In their first year of operation, they delivered 58 food and hygiene parcels, which equates to 1,291kg in weight, to support 144 individuals. Over the last few months demand has increased dramatically from 226kg in November 2021 to 568kg in March 2022. In order to meet the ever-growing demand, they urgently need to raise more funds to help cover the rapidly increasing costs of providing the service. Please help if you can.

Rick Meyer – Richard.meyer@midsuffolk.gov.uk



Quiet Lanes Suffolk (QLS) Update May 2022

Since the Winter 2021 Newsletter all the posts were installed by Highways and, after looking bare for a few weeks, the signs are now all in place.

Wetherden Parish Council has asked if we would endorse their application to extend a QLS along the Wetherden Road to join ours at Daisy Green (Grange Farm). Our Parish Council agreed as long as all costs were met by Wetherden. Given our experience it may be months before it is in place.

Quiet Lanes are now part of the revised Highway Code published in January. In a recently reported case highlighted by QLS a driver was fined £1,008 and ordered to pay £100 in costs and a £101 victim surcharge, and also had his driving licence endorsed with five penalty points. The summary was:

'Drivers should always try to give cyclists and other vulnerable road users at least 1.5m of space and pass slowly. In this instance, on this road, that would not be possible.'

'On this occasion, the correct thing to do would have been to come to a stop to allow the cyclists to pass safely. It takes a couple of seconds and then everyone can continue their journey in safety.'

Arthur Peake, Parish Councillor

Editor: The eight changes made to the Highway Code in January 2022 can be found at <https://www.gov.uk/government/news/the-highway-code-8-changes-you-need-to-know-from-29-january-2022>

Village Hall news

To celebrate the Queen's Platinum Jubilee, we will be putting on a BBQ at the usual Pub night on Friday 3rd June. There will be burgers and sausages available (supplied by Rolfe's in Elmswell) together with the usual beers, wine and soft drinks. Let's hope for a warm sunny evening.

The next Pub Evenings will be:

Friday 1st July at 7.30pm

August — No Pub Evening

Friday 2nd September at 7.30pm

The Annual General Meeting for the Village Hall is held in September when we will be looking for new members to join our friendly team because several people are retiring. There are usually three to four meetings a year to organise events.

If you would like to get involved and meet new people, please contact Roy or Di Barker on 241045.

Sue Howes

Village Hall Draw results

FEBRUARY	1st	£25	Sue Howes	No. 217
	2nd	£15	J Bird	No. 228
	3rd	£10	Anna Reed	No. 182
	4th	£5	Jane Storey	No. 160
MARCH	1st	£25	Arthur Peake	No. 237
	2nd	£15	David Leaver	No. 202
	3rd	£10	C Seaton	No. 233
	4th	£5	M Barrow	No. 171
APRIL	1st	£25	Di Barker	No. 101
	2nd	£15	Jill Bent-Marshall	No. 3
	3rd	£10	Richard Putland	No. 236
	4th	£5	Mr Gale	No. 231

We are happy to collect cash or cheques for your annual payment (£12), but if you prefer to pay online please contact me at robin@greenbee.net or phone 01359 259113. Thank you for your support of Lord Thurlow Hall.

Margaret Barrett

Jubilee clean up

A huge thank you to all those residents, new and old, who turned out to help tidy up around the village on Saturday in preparation for the Platinum Jubilee weekend. It was the perfect opportunity to put our new litter picking equipment (given to us by MSDC) to good use.

A grateful thank you also to those residents who have taken the time recently to sweep pavements and to wash and trim around the various road signs throughout the village.

It was lovely to meet some of our newer and younger village residents, and a great effort was made by all involved.

Carol White, Parish Clerk



Mobile phone laws

On 25th March this year it became illegal to use a handheld mobile phone behind the wheel for virtually any use – including taking photos, scrolling through playlists, looking at social media accounts or playing games.

The minimum penalty if caught driving while using a mobile phone is six penalty points and a £200 fine. However, the maximum penalties are a £1,000 fine, six points and a driving ban.

This new law has closed a loophole in the legislation around using a mobile phone while driving, which was originally brought into force at a time before phones had cameras and could be used to browse the internet.

An exemption allows drivers to make contactless payment in a drive-thru when stationary. However, it still continues to be illegal to use your phone in stationary traffic – whether in a traffic jam or at the lights.

All Saints' Church

Rector – Revd Katharine Valentine

01359 235095

Monthly pattern of Worship

First Sunday – 10am Benefice Family@Church

St Mary's Church, Pakenham, breakfast available from 9.30am

Second Sunday – 9.30am Morning Worship

Third Sunday – 11am Family Communion

Fourth Sunday – 9.30am-11.30am Community Breakfast TOAST

TOAST Community Breakfast

9.30 — 11.00 am

On fourth Sunday of the month drop in to the church where bacon rolls, toast with a selection of preserves, coffee, tea and juice are available along with the chance to catch up with fellow villagers.

TOAST on Mothering Sunday

Along with breakfast, visitors had the chance to make posies from a colourful selection of spring flowers to take away with them. A number of posies were also made up as gifts from All Saints Church for those who were unable to join us and distributed around the village.



EASTER

On Good Friday 15th April our Rector, Katherine Valentine, and members of the church community met at the village hall to decorate small wooden crosses with blue and yellow ribbons in support of Ukraine. We then processed to the church where a short service was held in the chancel followed by tea and hot cross buns.

Thank you to everyone who helped decorate the church for Easter.

YARD & PLANT SALE - 30th APRIL

Thank you to everyone who helped at and all who visited the sale at Limes Farm on a lovely sunny day.

We are delighted to report the sum of £1,650 was raised and will go towards the cost of repair work in the chancel, which will hopefully happen later this year.

Plants that were left over, as well as some new stock, are available to buy outside Ernie and Shirley Meekings' house on Norton Road.

Church Wardens

Roy Barker 241045

Raymond Mayhew 240741

Details of services held in our church are at www.achurchnearyou.com

The Benefice village and church news magazine is available to read online www.vcnews.org.uk



Petrina Miles

Michael Reeve

Shortly before Eastern old resident of Great Ashfield was laid to rest in All Saints' Churchyard alongside his wife. Michael and Charmian Reeve made their home in Great Ashfield for several years and entered into village life, among other things opening their garden for Fetes and their swimming pool whenever the weather was hot!

Realising eventually that they needed to be closer to family, they relocated to their London flat. Charmian's sudden death shortly after this brought Michael and his family back to Great Ashfield, so she could lie in the churchyard. Michael visited on many occasions, driven here by his son, Hugo, to join in services at Church and have meals with friends. Sadly, this declined as his health became worse, and after a long battle, he died, asking to be brought back to Great Ashfield and Charmian.

Having had Michael's funeral and cremation in London, his sons, family and friends from the village who remembered him, gathered for a short service on April 11th for the burial of his ashes, before share refreshments in the chancel and reminiscing over times spent with Michael. May he rest in peace and rise in glory.

Di Barker

Defibrillator update

Steve Murrow – a paramedic and a member of the SARS team – gave eleven Great Ashfield residents a very informative lesson on how to recognise a person in need of life support and exactly what to do in that instance.

Although daunting, he assured us that using the defibrillator was fool-proof as all we had to do was follow the instructions on the machine.

The machine is attached to the front of the village hall. Hopefully it will never have to be used, but it could save someone's life.

*Produced for Great Ashfield Parish Council by Mandie Beckley
Printed by Profile Business Supplies,
Bury St Edmunds
© Great Ashfield Parish Council 2022*